



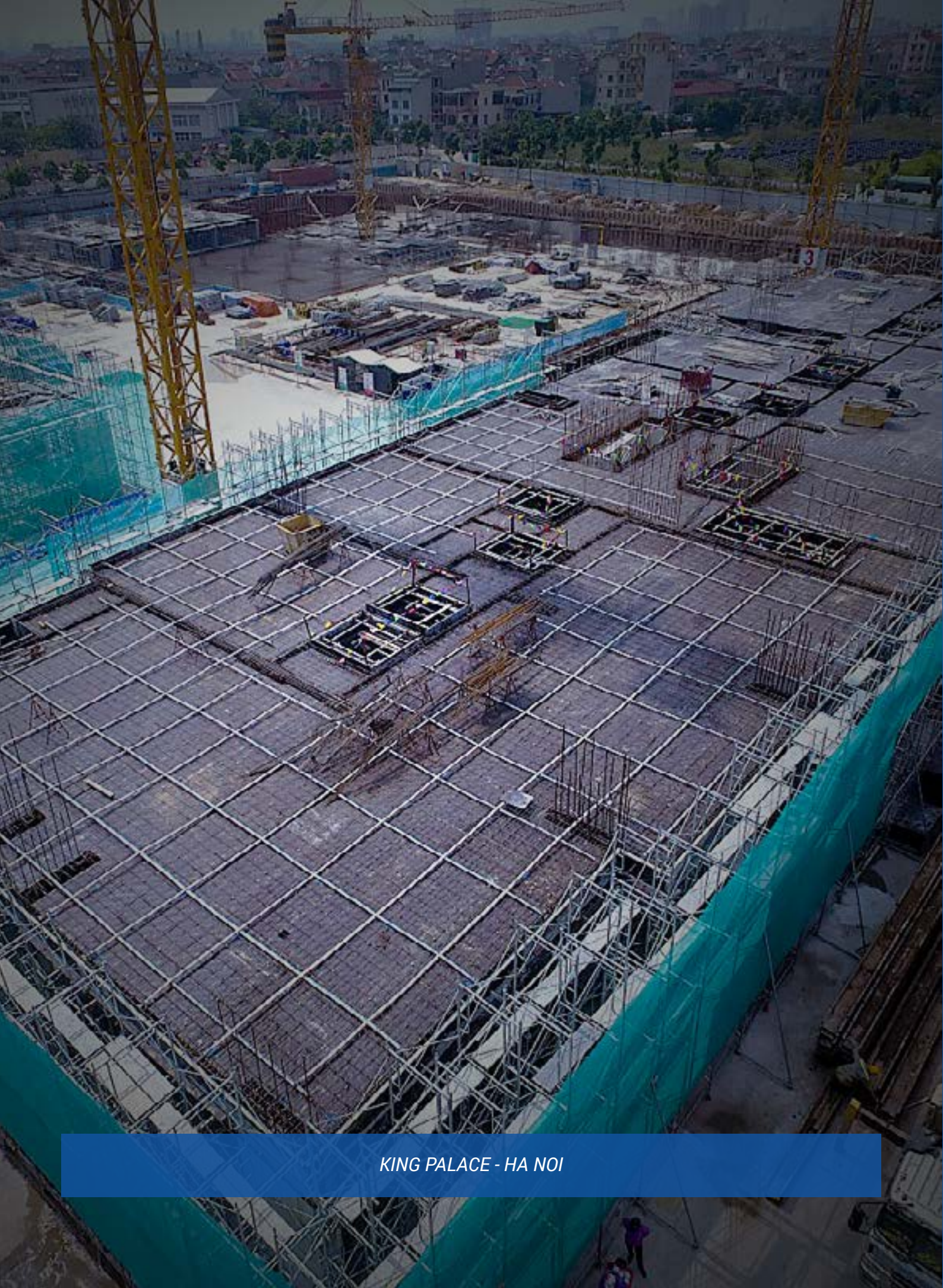
PHU MY ENGINEERING JOINT STOCK COMPANY

PMEC

34 Street 1D, Phu Huu Ward, Thu Duc City, HCM City

☎ 028 6675 1279
✉ info@pmec.com.vn
🌐 www.pmec.com.vn

CATALOGUE
PMEC STRESSING SYSTEM



KING PALACE - HA NOI

CONTENTS

| | |
|---------------------------------|-----------|
| OVERVIEW | 1 |
| 1 ABOUT US | 2 |
| 2 MAIN ACTIVITIES | 3 |
| • PRODUCTION AND TRADING | 4 |
| • PT DESIGN & CONSTRUCTION | 5 |
| • STRUCTURAL ENGINEERING | 6 |
| 3 CERTIFICATES | 7 |
| PT PRODUCT | 8 |
| 1 PMEC ANCHORAGE | 9 |
| • OVERVIEW | 10 |
| • APPLICATION OF PMEC ANCHORAGE | 11 |
| • PMEC FLAT ANCHORAGE | 12 |
| • PMEC ROUND ANCHORAGE | 13 |
| 2 DUCT | 14 |
| 3 MACHINE - ACCESSORIES | |
| TYPICAL PROJECTS | 16 |

ABOUT US

Having established in 2007, PHU MY Engineering & Construction Joint Stock Company (PMEC) is very proud as the first Vietnam professional company in applying the post tensioning design and construction for building and industrial projects.

We dedicate our best efforts to promote the application of the latest techniques and state-of-the-art of the construction industry in Vietnam to best serve the community benefit by minimizing the construction cost and schedule while still maximizing the project quality.

To achieve this mission, our experienced staffs with enthusiastic spirit working towards the “Best efforts for clients’ interests” always commit to deliver the highest added value services to our esteemed clients.

A significant milestone is achieved in successfully researching and producing the post tensioning products of PMEC post tensioning system including: PMEC lived-end anchorages, duct, tendon chair and other equipment for the post tensioning installation.

The PMEC anchorage system was granted the Industrial Design Patent by the Vietnam Intellectual Property Bureau under the Ministry of Science and Technology according to the Decisions number 1118w/QĐ-SHTT and 1127w/QĐ-SHTT dated January 28, 2021.

D' EDGE THAO DIEN - HCM CITY



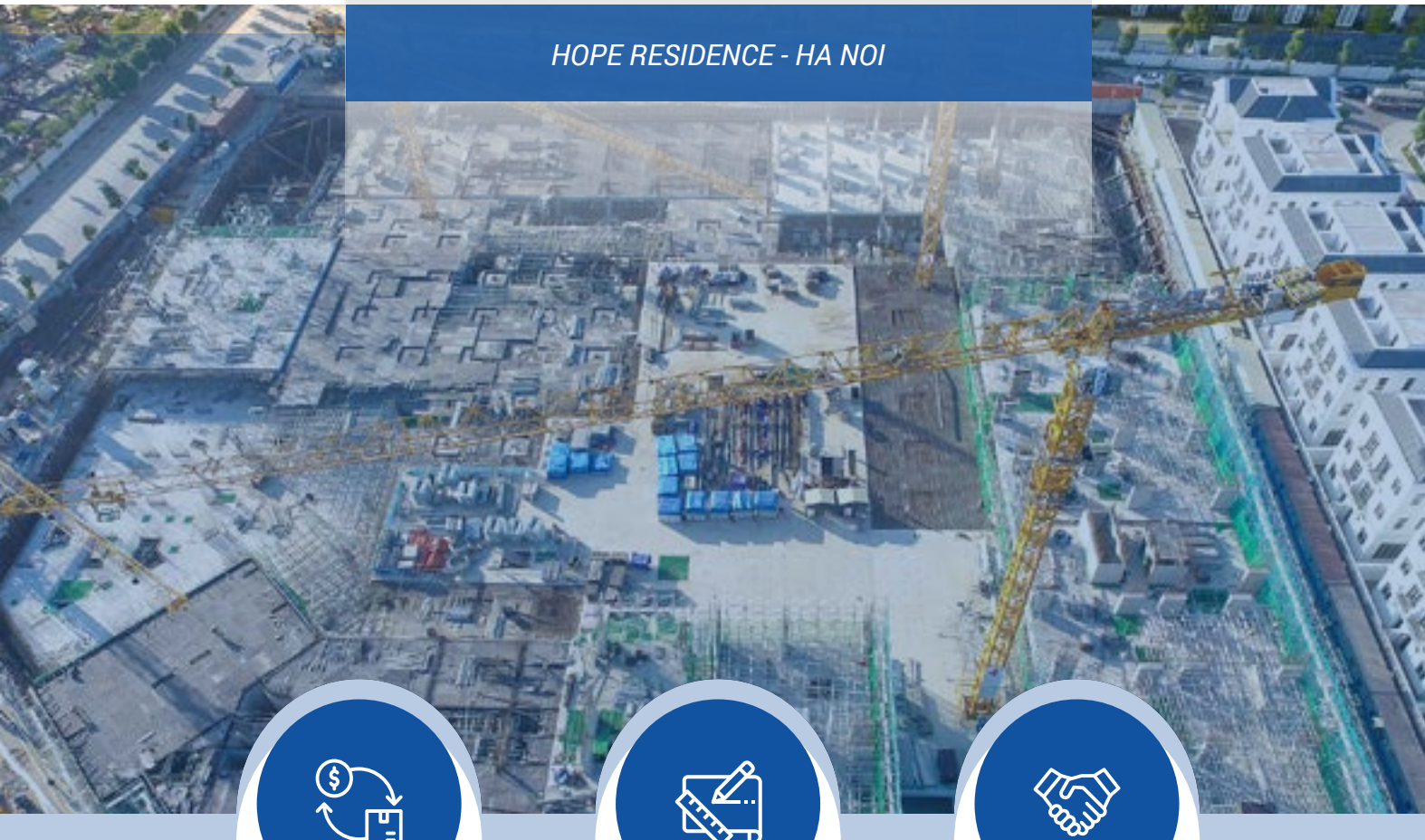
PMEC anchorage is a part of a synchronizing PMEC post tensioning system and complying with European standards of BS 4447 and BS EN 13391. The anchorage products are also well performed according to European ETAs of ETAG 013/ EAD 160004. Our products were successfully applied in various post tensioning projects in Vietnam.

FIELD OF ACTIVITIES

PMEC has successfully inherited, applied and developed the latest knowledge of post tensioning field of design & construction of post tensioning solution for building & industrial projects.

On that basis, PMEC is continuing all improvements for our services and products to develop the company in its core business fields:

HOPE RESIDENCE - HA NOI



PRODUCTION AND TRADING



POST TENSIONING DESIGN & CONSTRUCTION

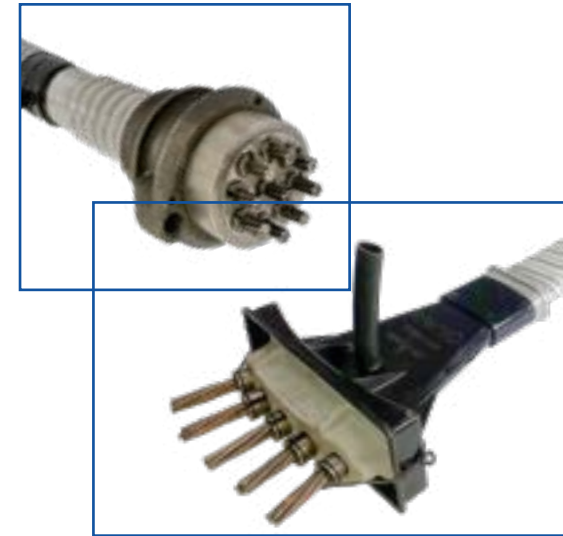


STRUCTURAL ENGINEERING



PRODUCTION AND TRADING

PMEC continue to extend its production of mechanical products of PMEC system for post tensioning field in Vietnam and overseas markets. The most important part of PMEC system is the lived-end anchorages those are suitable for most popular post tensioning application.



POST TENSIONING DESIGN & CONSTRUCTION

Since 2007 till now, we have accumulative experiences over 300 projects in Vietnam and neighbor countries. We target to become the leading post tensioning firm in Vietnam.

HACOM GALACITY - NINH THUAN

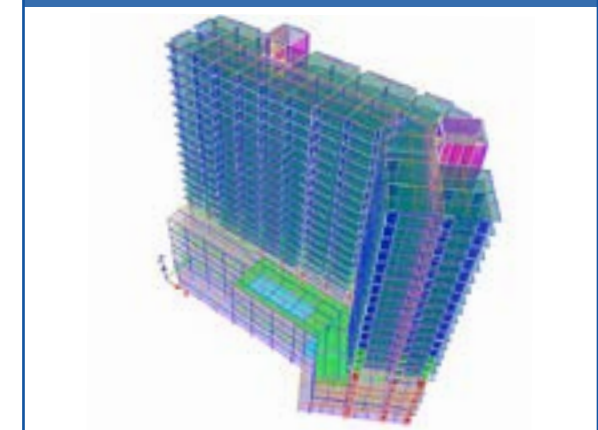


STRUCTURAL ENGINEERING

Design & Engineering services provided by PMEC are always meet clients' requirement in terms of budget, schedule and quality. In any design/ engineering projects we always discuss thoroughly with our clients to formulate the most suitable specification for the project and set the budget in early stage. Our design focuses on the specification, budget, schedule and quality to satisfy clients' high requirements.

PMEC has implemented and completed many large-scale projects in Vietnam as structural engineering consultants or architect (via PMAC). We are able to provide our esteemed clients full scope design/engineering services, peer review for industrial and building projects. Our design professional licenses could be verified in the Ministry of Construction Website.

APARTMENT - TP. HCM



CERTIFICATES

SỞ KẾ HOẠCH VÀ ĐẦU TƯ
THÀNH PHỐ HỒ CHÍ MINH
PHÒNG ĐĂNG KÝ KINH DOANH

CỘNG HÒA XÃ HỘI CHỦ NGHĨA VIỆT NAM
Độc lập – Tự do – Hạnh phúc

**GIẤY CHỨNG NHẬN ĐĂNG KÝ DOANH NGHIỆP
CÔNG TY CỔ PHẦN**

Mã số doanh nghiệp: 0305001343
Đăng ký lần đầu: ngày 03 tháng 05 năm 2007
Đăng ký thay đổi lần thứ: 13, ngày 18 tháng 10 năm 2023

1. Tên công ty
Tên công ty viết bằng tiếng Việt: CÔNG TY CỔ PHẦN KỸ THUẬT XÂY DỰNG PHÚ MỸ
Tên công ty viết bằng tiếng nước ngoài: PHU MY ENGINEERING CONSTRUCTION JOINT STOCK COMPANY
Tên công ty viết tắt: PMEC JSC

2. Địa chỉ trụ sở chính
613 Nguyễn Kiệm, Phường 09, Quận Phú Nhuận, Thành phố Hồ Chí Minh, Việt Nam
Điện thoại: 3948 1126
Email: info@pmec.com.vn
Fax: 3948 1127
Website:

3. Vốn điều lệ: 98.000.000.000 đồng.
Bằng chữ: Chín mươi tám tỷ đồng
Mệnh giá cổ phần: 10.000 đồng
Tổng số cổ phần: 9.800.000

4. Người đại diện theo pháp luật của công ty
* Họ và tên: HOÀNG VIỆT ANH
Giới tính: Nam
Chức danh: Tổng giám đốc
Sinh ngày: 12/04/1976
Dân tộc: Kinh
Quốc tịch: Việt Nam
Loại giấy tờ pháp lý của cá nhân: Thẻ căn cước công dân
Số giấy tờ pháp lý của cá nhân: 001076019738
Ngày cấp: 25/08/2022
Nơi cấp: Cục Trưởng Cục Cảnh sát – QL Hành Chánh Về Trật Tự Xã Hội
Địa chỉ thường trú: 188/8 Đường số 8, Phường 11, Quận Gò Vấp, Thành phố Hồ Chí Minh, Việt Nam
Địa chỉ liên lạc: 188/8 Đường số 8, Phường 11, Quận Gò Vấp, Thành phố Hồ Chí Minh, Việt Nam

**TRƯỞNG PHÒNG
PHÓ TRƯỞNG PHÒNG**

PHÒNG ĐĂNG KÝ KINH DOANH

Nguyễn Trung Chánh

BUSINESS LICENSE

BỘ XÂY DỰNG
CỤC CÔNG TÁC PHÍA NAM

CỘNG HÒA XÃ HỘI CHỦ NGHĨA VIỆT NAM
Độc lập - Tự do - Hạnh phúc

**CHỨNG CHỈ
NĂNG LỰC HOẠT ĐỘNG XÂY DỰNG**

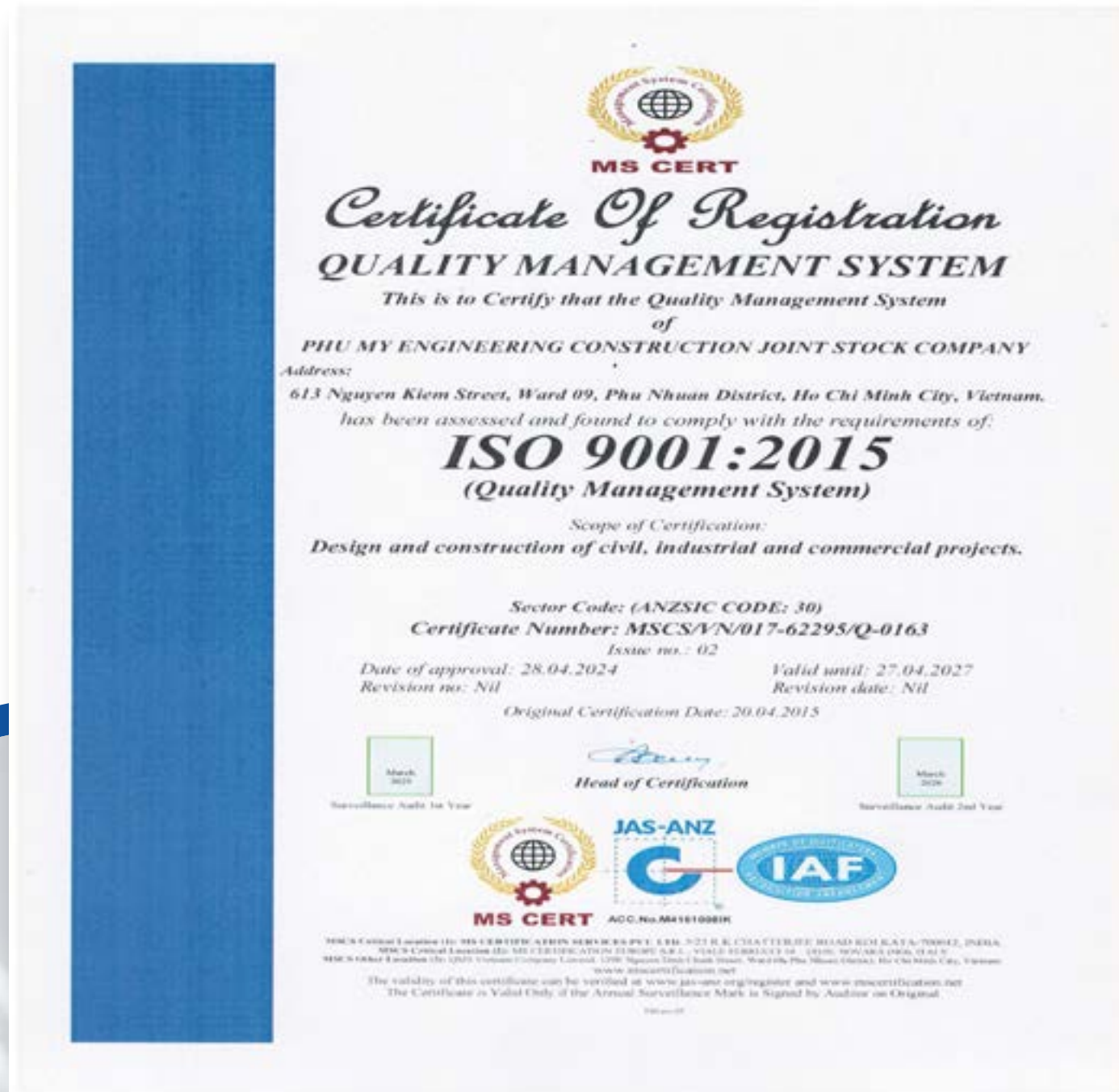
Số: BXD-00001728
(Ban hành kèm theo Quyết định số: 88/QĐ-CPN-DN ngày 25/02/2022)

Tên tổ chức: CÔNG TY CỔ PHẦN KỸ THUẬT XÂY DỰNG PHÚ MỸ
Giấy chứng nhận đăng ký doanh nghiệp/ Quyết định thành lập số: 0305001343
Ngày cấp: 03/5/2007. Thay đổi lần thứ 12, ngày 04/8/2020.
Nơi cấp: Sở Kế hoạch và Đầu tư Thành phố Hồ Chí Minh.
Tên người đại diện theo pháp luật:
Ông/Bà: Hoàng Việt Anh
Chức vụ: Tổng Giám đốc
Địa chỉ trụ sở chính: Số 613 Nguyễn Kiệm, Phường 9, Quận Phú Nhuận, Thành phố Hồ Chí Minh.
Số điện thoại: 028 39481126
Số fax: 028 39481127
E-mail: info@pmec.com.vn
Website:
Phạm vi hoạt động xây dựng:
- Thiết kế, thẩm tra thiết kế xây dựng công trình Dân dụng: Hạng I
- Thi công xây dựng công trình Dân dụng: Hạng I
Chứng chỉ này có giá trị đến hết ngày: 25/02/2032.

TP Hồ Chí Minh, ngày 25 tháng 02 năm 2022
KT. CỤC TRƯỞNG
PHÓ CỤC TRƯỞNG
Ngô Hoàng Nguyên

CERTIFICATE OF CONSTRUCTION
ACTIVITY CAPABILITY

CERTIFICATES



**CERTIFICATE OF APPROVAL
ISO 9001:2015**



**CONFORMS TO STANDARD
BS 4447:1973**

PMEC ANCHORAGE SYSTEM



BW CU CHI - HCM CITY

GENERAL INTRODUCTION

The tendon anchorage is very important in post tensioning concrete structure since it holds the stress in the tendon and transfer this pre-stress to the concrete. The anchorage plays the decisive role in maintaining the structure life cycle.

This is the reason why professional post tensioning firms in the world has developed their owned anchorages for their owned system to assure the quality.

The main objectives in developing the owned anchorages is to make sure the stressing work is well controlled to minimize the stress loss and potential errors of the post tensioning crew since each system requires different detailed method and accessories tools & equipment. This is to make sure the pre-stress is according to the design as well as the structure sustainability.



Anchorage head - 2 holes



Anchorage head - 3 holes



Anchorage head - 4 holes



Anchorage head - 5 holes



Anchorage head - Round type



LAVITA CHARM - HCM CITY

PMEC post tensioning system is suitable for all concrete structures of building, industrial and civil projects.



EUROPEAN TECHNICAL ASSESSMENT
POST-TENSIONING SYSTEMS

www.eota.eu

The PMEC anchorage system was granted the Industrial Design Patent by the Vietnam Intellectual Property Bureau under the Ministry of Science and Technology according to the Decisions number 1118w/QĐ-SHTT and 1127w/QĐ-SHTT dated January 28, 2021.exclusive certification.

CODES & STANDARDS COMPLIANCE

- ✓ PMEC anchorage is a part of a synchronizing PMEC post tensioning system and complying with European standards of BS 4447 and BS EN 13391 and the requirement of American ACI 318 standards.
- ✓ The anchorage products are also well performed according to European ETAs of ETAG 013/ EAD 160004. Our products were successfully applied in various post tensioning projects in Vietnam.

STANDARDIZE, SPECIFICATION AND CONVENIENCE

- ✓ The anchorages are synchronized with equipment, tool and accessories to assure the quality of stressing work and minimize the stressing loss. The anchorage complies with 12.7mm and 15.24 mm strands.
- ✓ The trumpet and pocket former made by the plastic or recycle plastic: suitable for green projects in terms of using the recycle material.
- ✓ The horseshoe design helps in distribute the concentrated stress to the bearing plate and to the concrete structure.
- ✓ Easy in installation and transportation.

APPLICATION OF PMEC ANCHORAGE SYSTEM



1 APPLICATION IN BUILDING AND INDUSTRIAL PROJECTS

Suitable for all building and industrial projects with optimum cost, schedule and functions. PMEC anchorages include the flat type of 2 holes – 5 holes for the slab structure application. The multi-strand type from 6-31 holes used for transferred beams or slabs.



2 TRANSPORTATION PROJECTS

The multi-strand type from 6 – 31 holes is used for girders while the flat type is used in bridge slabs.

3 FOUNDATION WORKS

The anchorages could be used in ground anchor projects such as basement walls or similar retaining wall projects.



QUALITY ANNOUNCEMENT CERTIFICATE



| Số | Mô tả | Các tiêu | Việc của kỹ thuật | Nội quy |
|----|-----------------------|----------------------|----------------------|-------------|
| 1 | Chất lượng sản phẩm | Đạt yêu cầu kỹ thuật | Đạt yêu cầu kỹ thuật | Đạt yêu cầu |
| 2 | Chất lượng dịch vụ | Đạt yêu cầu kỹ thuật | Đạt yêu cầu kỹ thuật | Đạt yêu cầu |
| 3 | Chất lượng môi trường | Đạt yêu cầu kỹ thuật | Đạt yêu cầu kỹ thuật | Đạt yêu cầu |
| 4 | Chất lượng nhân lực | Đạt yêu cầu kỹ thuật | Đạt yêu cầu kỹ thuật | Đạt yêu cầu |
| 5 | Chất lượng tài chính | Đạt yêu cầu kỹ thuật | Đạt yêu cầu kỹ thuật | Đạt yêu cầu |

QUATEST 3
TRUNG TÂM KỸ THUẬT TIÊU CHUẨN ĐO LƯỜNG CHẤT LƯỢNG 3
QUALITY ASSURANCE & TESTING CENTER 3

KT3-0017BCK3 PHẪU KẾT QUẢ THỬ NGHIỆM
TEST REPORT 15/10/2021 Page 01/03

1. Tên mẫu: NEO - CÁP BÙ/ CĂNG LỰC 152 mm
2. Số lượng mẫu: 01
3. Mô tả mẫu: Mẫu là cáp thép dự ứng lực Ø 15,2 mm
4. Ngày nhận mẫu: 11/09/2021
5. Ngày thử nghiệm: 06/10/2021
6. Nơi gửi mẫu: CÔNG TY CỔ PHẦN KỸ THUẬT XÂY DỰNG PHÚ MỸ
196/12 Cộng Hòa, Tân Bình, TP Hồ Chí Minh
7. Phương pháp thử: EAD ETAG - 2013
8. Kết quả thử nghiệm: Xem trang 02/03, 03/03
See page

TL. TRƯỞNG PHÒNG CƠ KHÍ
FOR HEAD OF MECHANICAL TESTING LAB.
Lâm Chí Tín

TL. GIÁM ĐỐC/PP. DIRECTOR
TRUNG TÂM THỬ NGHIỆM
AMPHI-TESTING LAB.
Nguyễn Văn Tùng

QUATEST 3
TRUNG TÂM KỸ THUẬT TIÊU CHUẨN ĐO LƯỜNG CHẤT LƯỢNG 3
QUALITY ASSURANCE & TESTING CENTER 3

KT3-0017BCK3 PHẪU KẾT QUẢ THỬ NGHIỆM
TEST REPORT

8. Kết quả thử nghiệm/ Test results:

| Tên chỉ tiêu Specification | Kết quả thử nghiệm Test result |
|--|-----------------------------------|
| THỬ MẪM/ FATIGUE TEST | |
| 1. Đường kính danh nghĩa cốt thép, Ø Nominal diameter | mm 15,2 |
| 2. Diện tích mặt cắt ngang danh nghĩa, Cross section area | mm ² 140 |
| 3. Ứng suất tối thiểu thử nghiệm σ_{ap} Minimum testing stress | MPa 1.209 |
| 4. Phạm vi ứng suất σ_{ap} Range of testing stress | MPa 80 |
| 5. Số chu kỳ thử Number of testing cycle | 2.10 ⁶ |
| 6. Kết quả Test result | Không hỏng Not damaged |

QUATEST 3
TRUNG TÂM KỸ THUẬT TIÊU CHUẨN ĐO LƯỜNG CHẤT LƯỢNG 3
QUALITY ASSURANCE & TESTING CENTER 3

KT3-0017BCK3 PHẪU KẾT QUẢ THỬ NGHIỆM
TEST REPORT 18/10/2021 Page 01/03

1. Tên mẫu: NEO PMEC 3 LỖ
NEO PMEC 4 LỖ
NEO PMEC 5 LỖ
CÔNG TRÌNH CHUNG CƯ NGUYỄN BỈNH
2. Số lượng mẫu: 03 Cáp thép/ Steel wire strand
03 Mũi/ Anchor
03 Mũi/ Wedge
3. Mô tả mẫu: Mẫu là cáp thép dự ứng lực Ø 12,7 mm (S = 1 m - Nilon - Nilon 3 Lỗ - Nilon 4 Lỗ - Nilon)
4. Ngày nhận mẫu: 12/01/2021
5. Ngày thử nghiệm: 10/01/2021
6. Nơi gửi mẫu: CÔNG TY CỔ PHẦN KỸ THUẬT XÂY DỰNG PHÚ MỸ
613 Nguyễn Kim, Phường 9, Q. Phú Nhuận, TP Hồ Chí Minh
7. Phương pháp thử: BS EN 12796-2004, TCVN 10588: 2018
8. Kết quả thử nghiệm: Xem trang 02/03, 03/03
See page

TRƯỞNG PHÒNG CƠ KHÍ
HEAD OF MECHANICAL TESTING LAB.
Phạm Văn Chí

TL. GIÁM ĐỐC/PP. DIRECTOR
TRUNG TÂM THỬ NGHIỆM
AMPHI-TESTING LAB.
Nguyễn Văn Tùng

QUATEST 3
TRUNG TÂM KỸ THUẬT TIÊU CHUẨN ĐO LƯỜNG CHẤT LƯỢNG 3
QUALITY ASSURANCE & TESTING CENTER 3

KT3-0017BCK3 PHẪU KẾT QUẢ THỬ NGHIỆM
TEST REPORT 18/10/2021 Page 02/03

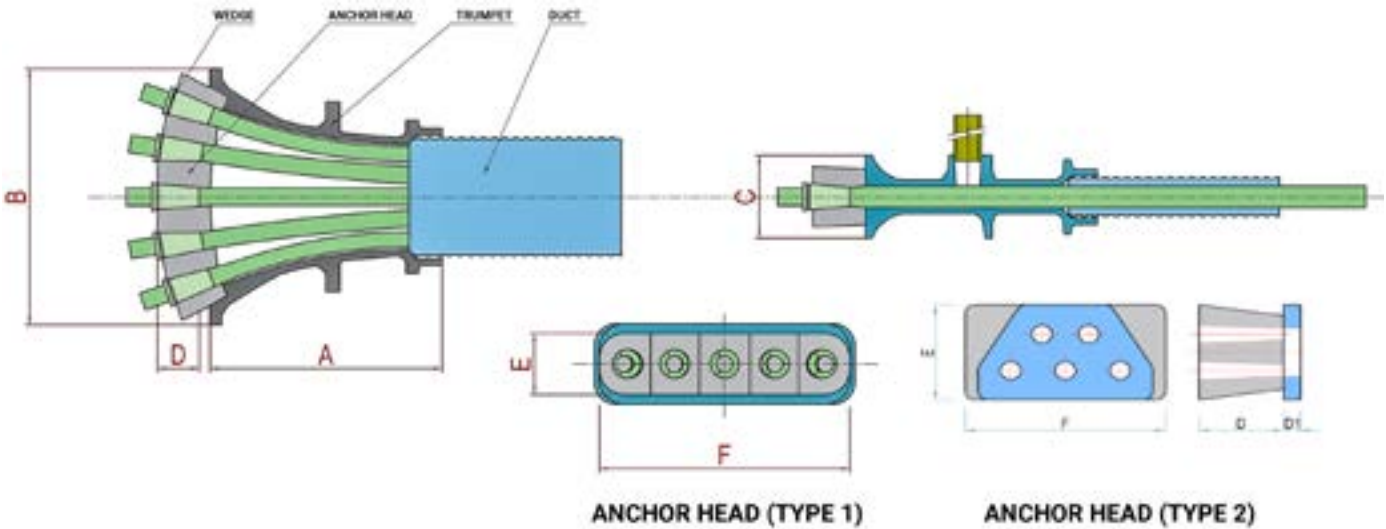
8. Kết quả thử nghiệm/ Test results:

| Tên chỉ tiêu Specification | Kết quả thử nghiệm Test result |
|--|--|
| THỬ TẢI NÉM MŨI/ WEDGE TEST | |
| 8.1. Tải trọng tại 20% F_{ax} Load at 20% F_{ax} | KN 31,0 41,0 51,0 34,8 36,8 36,8 |
| 8.2. Chiều cao của mũi tại F1, Height of wedge at load F1 | mm 1,09 3,32 8,40 |
| 8.3. Tải trọng tại 40% F_{ax} Load at 40% F_{ax} | KN 77,6 77,6 77,6 |
| 8.4. Chiều cao của mũi tại F2, Height of wedge at load F2 | mm 10,11 1,94 3,39 |
| 8.5. Tải trọng tại 80% F_{ax} Load at 80% F_{ax} | KN 147,2 147,2 147,2 |
| 8.6. Chiều cao của mũi tại F3, Height of wedge at load F3 | mm -0,40 0,96 5,34 -0,47 0,40 4,71 -0,49 0,02 4,74 |
| • Thời gian duy trì 1 phút Maintained time 1 minute | |
| • Thời gian duy trì 15 phút Maintained time 15 minute | |
| • Thời gian duy trì 60 phút Maintained time 60 minute | |

| Tên chỉ tiêu Specification | Kết quả thử nghiệm Test result |
|--|-----------------------------------|
| THỬ TẢI CÁP - NÉM NEO LOAD TEST OF CABLE - WEDGE ANCHOR | |
| 8.7. Lực kéo đứt Tensile load | KN 100,4 100,5 100,7 |
| 8.8. Vị trí hỏng Broken position | (*) (*) (*) |

Ghi chú/ Notes: (*) Đứt cáp, mũi neo không hỏng
Cable broken, wedge and anchor not damaged

FLAT ANCHORAGE



| 12.7mm Cable | | | | | | |
|--------------|-------------------|-----|----|--------------------------|----|-----|
| Type | Trumpet dimension | | | Anchorage head dimension | | |
| | A | B | C | D | E | F |
| PT205 | 214 | 183 | 99 | 46 | 75 | 132 |
| PT305 | 214 | 183 | 99 | 46 | 75 | 155 |
| PT405 | 247 | 205 | 99 | 46 | 75 | 178 |
| PT505 | 263 | 250 | 99 | 46 | 75 | 222 |

| 15.24mm Cable | | | | | | |
|---------------|-------------------|-----|-----|--------------------------|-----|-----|
| Type | Trumpet dimension | | | Anchorage head dimension | | |
| | A | B | C | D | E | F |
| PT206 | 214 | 183 | 99 | 52 | 75 | 154 |
| PT306 | 247 | 205 | 99 | 52 | 75 | 178 |
| PT406 | 263 | 250 | 99 | 52 | 75 | 222 |
| PT506 (T1) | 310 | 280 | 99 | 52 | 75 | 253 |
| PT506 (T2) | 285 | 212 | 120 | 52 / 12 | 100 | 193 |



ANCHORAGE HEAD - 2 HOLES



TOP



UNDERNEATH



FRONT



SIDE

ANCHORAGE HEAD - 3 HOLES



TOP



UNDERNEATH



FRONT



SIDE

ANCHORAGE HEAD - 4 HOLES



TOP



UNDERNEATH



FRONT



SIDE

ANCHORAGE HEAD - 5 HOLES (TYPE 1)



TOP



UNDERNEATH



FRONT



SIDE

ANCHORAGE HEAD - 5 HOLES (TYPE 2)



Top



Underneath



Front



Side

ANCHOR BEARING PLATE (TYPE 1)



Top



Underneath



Front



Side

ANCHOR BEARING PLATE (TYPE 2)



Top



Underneath



Front



Side

POCKET FORMER



Top



Underneath

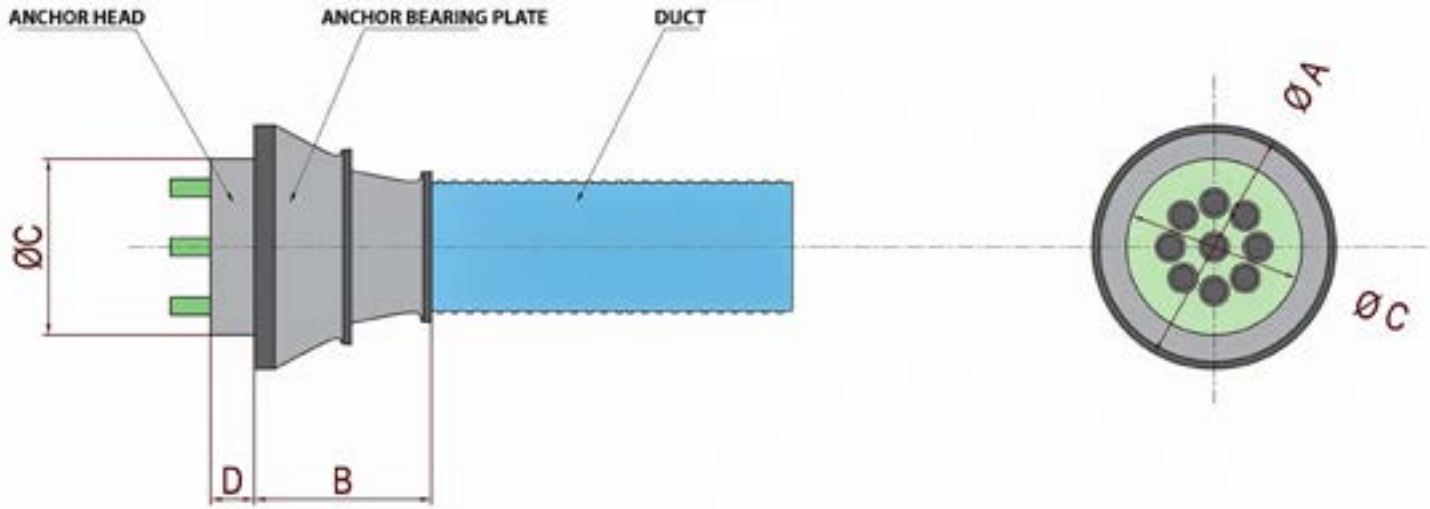


Front



Side

ROUND ANCHORAGE



12.7mm CABLE

| Type | Anchor bearing plate dimension | | Anchor head dimension | |
|--------|--------------------------------|--------|-----------------------|--------|
| | Round | Length | ØC (mm) | D (mm) |
| | A (mm) | B (mm) | | |
| PT605 | 160 | 130 | 107 | 45 |
| PT705 | 160 | 130 | 107 | 45 |
| PT805 | 170 | 160 | 117 | 48 |
| PT905 | 180 | 160 | 127 | 48 |
| PT1005 | 200 | 180 | 137 | 50 |
| PT1105 | 200 | 180 | 137 | 50 |
| PT1205 | 210 | 190 | 147 | 50 |
| PT1305 | 210 | 190 | 147 | 50 |
| PT1405 | 210 | 210 | 157 | 52 |
| PT1505 | 215 | 230 | 157 | 52 |
| PT1605 | 245 | 240 | 167 | 55 |
| PT1705 | 245 | 240 | 167 | 55 |
| PT1805 | 245 | 270 | 176 | 65 |
| PT1905 | 245 | 270 | 176 | 65 |

15.24mm CABLE

| Type | Anchor bearing plate dimension | | Anchor head dimension | |
|--------|--------------------------------|--------|-----------------------|--------|
| | Round | Length | ØC (mm) | D (mm) |
| | A (mm) | B (mm) | | |
| PT606 | 180 | 150 | 123 | 48 |
| PT706 | 180 | 150 | 123 | 48 |
| PT806 | 195 | 160 | 137 | 50 |
| PT906 | 208 | 170 | 147 | 50 |
| PT1006 | 220 | 180 | 158 | 52 |
| PT1106 | 235 | 190 | 158 | 52 |
| PT1206 | 235 | 190 | 158 | 54 |
| PT1306 | 235 | 190 | 168 | 54 |
| PT1406 | 250 | 210 | 178 | 56 |
| PT1506 | 265 | 245 | 178 | 56 |
| PT1606 | 275 | 265 | 188 | 60 |
| PT1706 | 275 | 265 | 188 | 60 |
| PT1806 | 285 | 280 | 198 | 65 |
| PT1906 | 285 | 280 | 198 | 65 |

DUCT

In the construction, the commonly used duct is a galvanized iron material, with a thickness of 0.25~0.3 mm. The size depends on the number of strand in the cable. However, in recent years, the galvanized iron duct has been progressively replaced by a plastic duct. Particularly in the construction market, which requires strict quality standards like Europe, almost all plastic duct in the construction of prestressed cables have been widely used, gradually replacing the iron duct.

Good quality and suitable duct will not be deformed, not open, not hinder the stretching process as well as corrode the cable in the long term; limits friction and stress loss during tension construction and helps the mortar to be filled to protect the cables, contributing to a longer and more sustainable construction.

PMEC DUCT

GALVANIZED IRON DUCT - FLAT TYPE



PLASTIC DUCT - FLAT TYPE



GALVANIZED IRON DUCT - ROUND TYPE

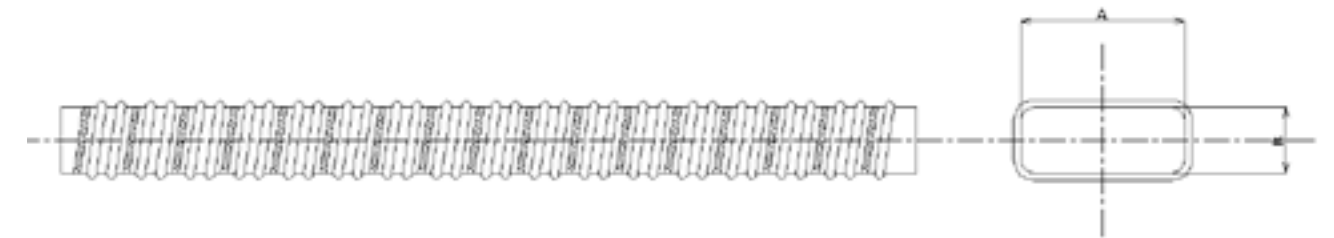


PLASTIC DUCT - ROUND TYPE



SPECIFICATION OF FLAT DUCT

| 12.7mm | | | 15.24mm | | |
|--------|-----------|--------|---------|-----------|--------|
| Type | Dimension | | Type | Dimension | |
| | B (mm) | A (mm) | | B (mm) | A (mm) |
| PT205 | 20 | 50 | PT206 | 20 | 50 |
| PT305 | 20 | 60 | PT306 | 20 | 60 |
| PT405 | 20 | 70 | PT406 | 20 | 80 |
| PT505 | 20 | 80 | PT506 | 20 | 90 |



SPECIFICATION OF ROUND DUCT

| Type | Dimension | |
|-------------|-----------|-----------|
| | I.D. (mm) | O.D. (mm) |
| 6~7 holes | D70 | D82 |
| 8~9 holes | D80 | D94 |
| 10~13 holes | D90 | D104 |
| 14~15 holes | D100 | D114 |
| 16~19 holes | D110 | D114 |
| 20~27 holes | D120 | D136 |
| 28~31 holes | D130 | D146 |



MACHINERY, EQUIPMENT & ACCESSORIES



MONO JACK



DEAD END ONION JACK



MULTI JACK



STAPLER GUN



BAR CHAIR



DEAD END ANCHOR CONNECTOR



STRAND PUSHER AND CUTTER



HYDRAULIC PUMP



MORTAR PUMP



AIR COMPRESSOR



VALVE



PIPE

TYPICAL PROJECTS

After more than 15 years of establishment and development, PMEC has been always proud of its ability to manufacture and supply all kinds of materials and equipment for production, business and trade in the market in the field of PT construction.

Phu My has supplied and installed PMEC anchorage system for many large and small projects in different provinces of Vietnam. Notably, there are some typical projects such as:

- The Nexus - Ricons
- Topaz Home District 9 - Viet Phat
- Bw 15 Factory - An Phu Gia & I-Tech
- Southern Guest House - General Department of Logistics - Phuc Hung Holdings
- Hyatt Place Ha Long Bay Hotel - Ricons
- Toyota Kien Giang - Novacons
- Hacom Galacity - Van Lang
- Nhat Ha Hotel - Ricons
- New Far Eastern - ACSC
- Dong Nai Administrative Center - Bien Hoa Dong Nai Project Management Unit
- CT Plaza Nguyen Hong - C.T Group...

And many other projects are scattered from North to South.

BW CU CHI - HCM CITY



TOPAZ HOME DISTRICT 9



FACTORY BW 15



THE NEXUS



HACOM GALACITY



NHAT HA HOTEL



NEW FAR EASTERN



DONG NAI ADMINISTRATIVE CENTER



CT PLAZA NGUYEN HONG



SOUTHERN GUEST HOUSE - GENERAL DEPARTMENT OF LOGISTICS

TOPAZ HOME DISTRICT 9

50,000 m² | 17 floors - 4 Blocks



Project : TOPAZ HOME 2
 Address : Tan Phu Ward, District 9, HCM City
 Investor : Thuan Kieu Company và Van Thai Land
 Main contractor : VIET PHAT INVESTMENT - TRADE COMPANY LIMITED
 Item : Supply PMEC anchorage

PROJECT SCALE

Total area : 50,000 m²
 Number of floors : 04 Block, 17 floors
 Number of PMEC anchor : > 3,500 anchorages: 03~05 holes (12.7mm)

FACTORY BW 15

90,000 m² | 2 floors



Project : FACTORY BW 15
 Address : Tan Phu Trung Industrial Park, Cu Chi, HCM City
 Investor : SAIGON LOGISTICS INDUSTRIAL DEVELOPMENT LIMITED LIABILITY COMPANY
 Main contractor : An Phu Gia & I-Tech
 Item : Supply PMEC anchorage

PROJECT SCALE

Total area : 90,000 m²
 Number of floors : 02 floors
 Number of PMEC anchor : > 2,837 anchorages: 04 holes (15.24mm)

THE NEXUS

133,834 m² | 26-35 floors



| | |
|-----------------|--|
| Project | : THE SUN TOWER |
| Address | : Ton Duc Thang Street, Ben Nghe Ward, District 1, HCMC |
| Investor | : RC Real Estate Financing Development JSC (Refico) |
| Main contractor | : Ricons Construction Investment Group Joint Stock Company |
| Item | : Supply PMEC anchorage |

PROJECT SCALE

| | |
|-----------------------|--------------------------------|
| Total area | : 100,000 m ² |
| Number of floors | : 26-35 floors |
| Number of PMEC anchor | : > 6,500 anchorages: 05 holes |

HACOM GALACITY

50,000 m² | 12 floors - 4 blocks



| | |
|-----------------|---|
| Project | : HACOM GALACITY |
| Address | : New urban area, North City. Phan Rang, Thap Cham, Ninh Thuan Province |
| Investor | : Thanh Dong Ninh Thuan Joint Stock Company |
| Main contractor | : Van Lang Co.,Ltd |
| Item | : Supply PMEC anchorage |

PROJECT SCALE

| | |
|-----------------------|---|
| Total area | : 50,000 m ² |
| Number of floors | : 04 Blocks, 12 floors |
| Number of PMEC anchor | : > 4,000 anchorages: 02 holes and 04 holes |

NHAT HA HOTEL

19,000 m² | 15 floors



| | |
|-----------------|---|
| Project | : NHAT HA HOTEL |
| Address | : Le Hong Phong Street, Dong Khe Ward, Ngo Quyen District, Hai Phong City |
| Investor | : Hotels Nhat Ha Co.,Ltd |
| Main contractor | : RICON GROUP CONSTRUCTION INVESTMENT JOINT STOCK COMPANY |
| Item | : Supply PMEC anchorage |

PROJECT SCALE

| | |
|-----------------------|--|
| Total area | : 19,000 m ² |
| Number of floors | : 15 floors |
| Number of PMEC anchor | : > 978 anchorages: 02 holes và 03 holes |

NEW FAR EASTERN

60,000 m² | 3 floors



| | |
|-----------------|---|
| Project | : FACTORY NEW FAR EASTERN |
| Address | : D5 Street, Bac Dong Phu Industrial Park, Dong Phu District, Binh Phuoc Province |
| Investor | : New Apparel Far Eastern Co., Ltd. (Vietnam) |
| Main contractor | : ARCHITECTS & CONSTRUCTION SERVICE CORPORATION |
| Item | : Supply PMEC anchorage |

PROJECT SCALE

| | |
|-----------------------|---|
| Total area | : 60,000 m ² |
| Number of floors | : 03 floors |
| Number of PMEC anchor | : > 1,280 anchorages: 02 holes, 03 holes and 04 holes |

DONG NAI ADMINISTRATIVE CENTER

20,000 m² | 9 floors



| | |
|-----------------|--|
| Project | : DONG NAI ADMINISTRATIVE CENTER |
| Address | : H22, Vo Thi Sau Street, Thong Nhat Ward, Bien Hoa, Dong Nai Province |
| Investor | : Project Management Board Bien Hoa, Dong Nai |
| Main contractor | : Xuan Thanh Construction Development Co.,LTD & Phat Dat Co.,LTD |
| Item | : Supply PMEC anchorage |

PROJECT SCALE

| | |
|-----------------------|---|
| Total area | : 20,000 m ² |
| Number of floors | : 09 floors |
| Number of PMEC anchor | : 1,070 anchorages: 02 holes, 03 holes and 05 holes |

CT PLAZA NGUYEN HONG

40,000 m² | 17 floors



| | |
|-----------------|--|
| Project | : CT PLAZA NGUYEN HONG |
| Address | : No 18, Nguyen Hong Street, Ward 1, Go Vap District, HCM City |
| Investor | : C.T Group Joint Stock Company |
| Main contractor | : CRICONS GROUP CONSTRUCTION INVESTMENT JOINT STOCK COMPANY |
| Item | : Supply PMEC anchorage |

PROJECT SCALE

| | |
|-----------------------|-----------------------------------|
| Total area | : 40,000 m ² |
| Number of floors | : 17 floors |
| Number of PMEC anchor | : > 1,270 anchorages: 03~05 holes |

GUEST HOUSE GENERAL DEPARTMENT OF LOGISTICS - KHANH HOA

30,000 m² | 18 floors

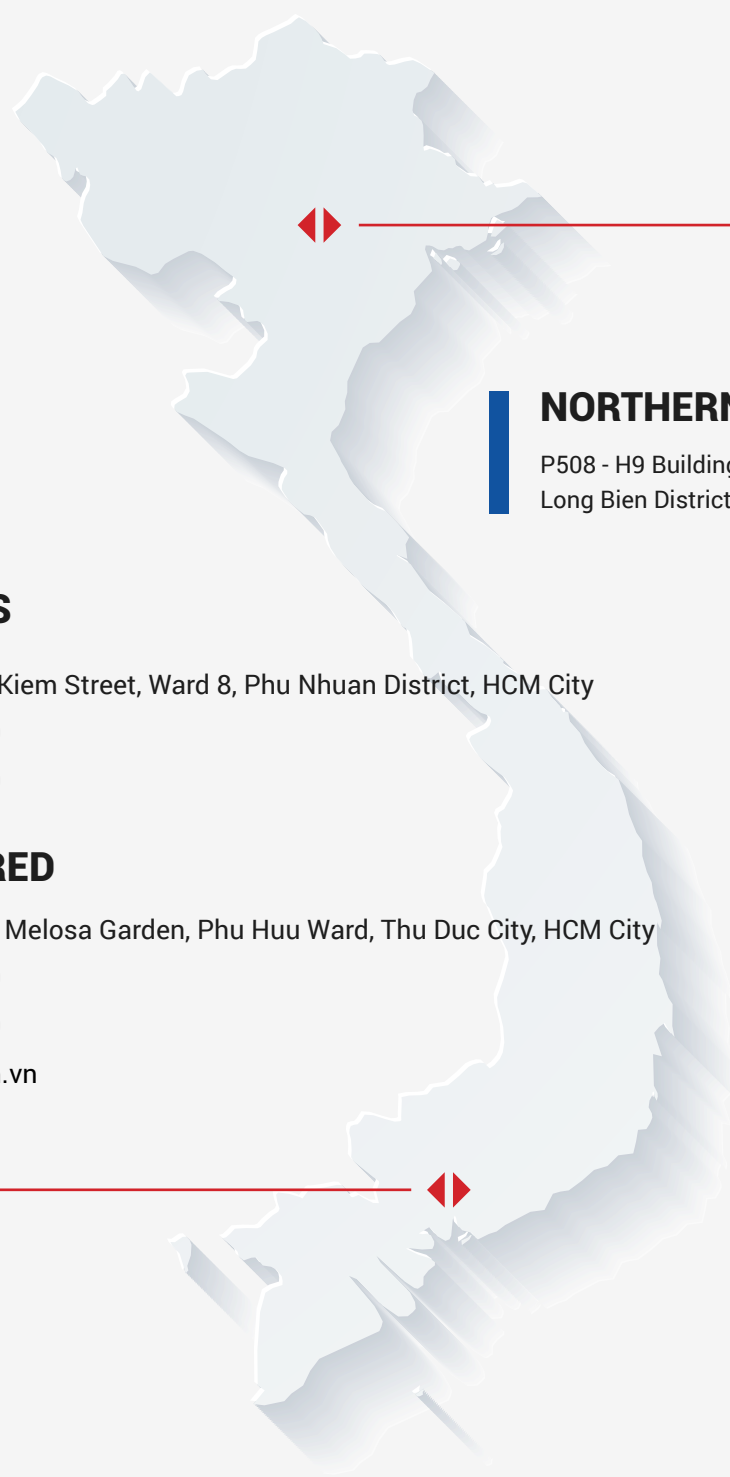


| | |
|-----------------|---|
| Project | : Guest House General Department of Logistics - KHANH HOA |
| Address | : Loc Tho Ward, Nha Trang City, Khanh Hoa Province |
| Investor | : General Department of Logistics Khanh Hoa |
| Main contractor | : Phuc Hung Holdings Construction Joint Stock Company |
| Item | : Supply PMEC anchorage |

PROJECT SCALE

| | |
|-----------------------|---------------------------------------|
| Total area | : 15,069m² |
| Number of floors | : 14 floors |
| Number of PMEC anchor | : > 943 anchorage: 02 holes, 03 holes |




CONTACT







NORTHERN OFFICE

P508 - H9 Building, Viet Hung
Long Bien District, Ha Noi City

HEADQUARTERS

 No 613 Nguyen Kiem Street, Ward 8, Phu Nhuan District, HCM City
 (028) 6675 1279
 (028) 6675 1279

OFFICE DELIVERED

 No 34 Street 1D, Melosa Garden, Phu Huu Ward, Thu Duc City, HCM City
 (028) 6675 1279
 (028) 6675 1279
 info@pmec.com.vn



PHU MY ENGINEERING CONSTRUCTION JOINT STOCK COMPANY

Website: www.pmec.com.vn
Email: info@pmec.com.vn
Phone: (84-28) 6675 1279

