



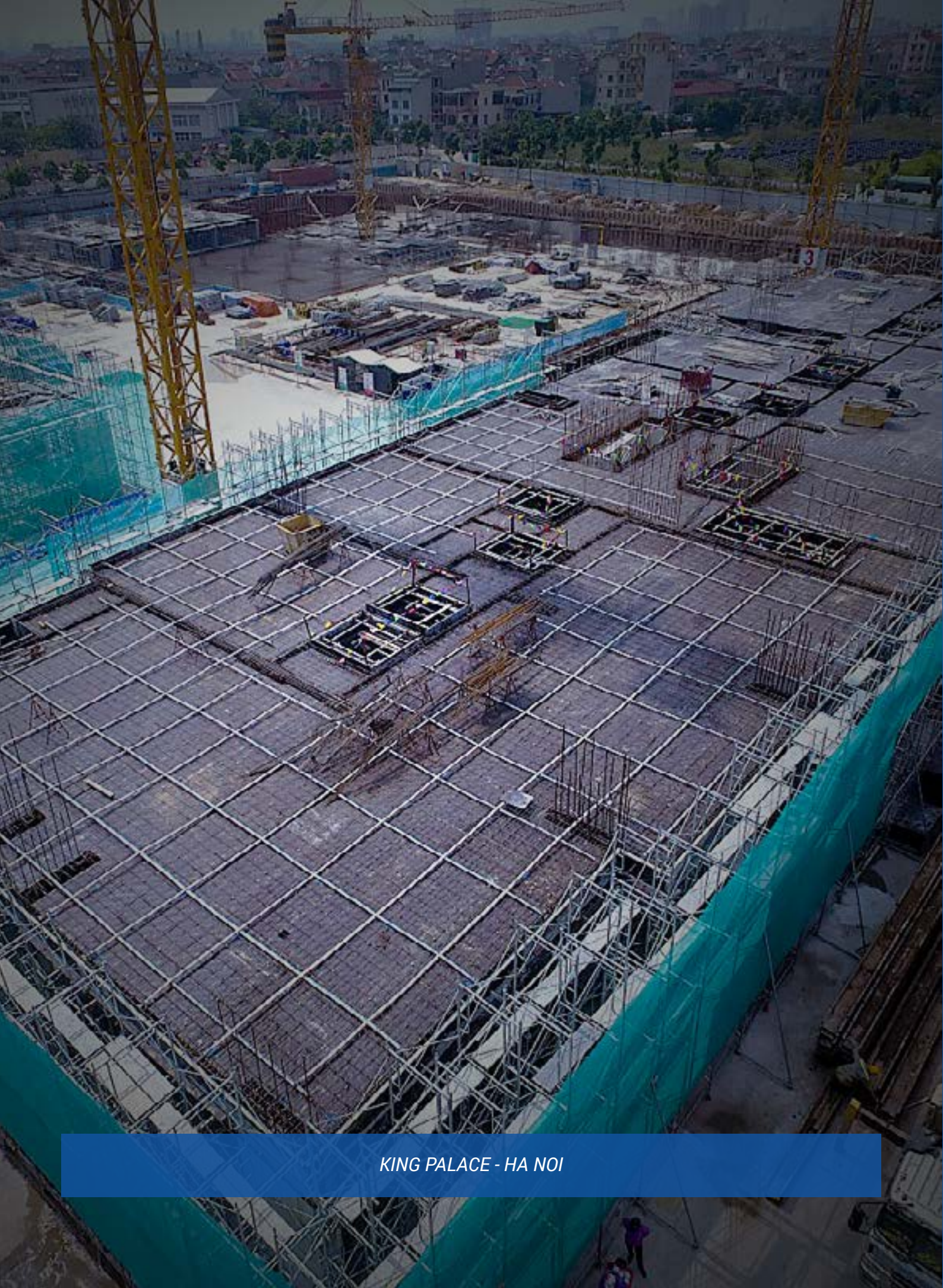
PHU MY ENGINEERING JOINT STOCK COMPANY

PMEC

34 Street 1D, Phu Huu Ward, Thu Duc City, HCM City

☎ 028 6675 1279
✉ info@pmec.com.vn
🌐 www.pmec.com.vn

CATALOGUE
PMEC STRESSING SYSTEM



KING PALACE - HA NOI

CONTENTS

OVERVIEW		1
1	ABOUT US	2
2	MAIN ACTIVITIES	3
	• PRODUCTION AND TRADING	4
	• PT DESIGN & CONSTRUCTION	5
	• STRUCTURAL ENGINEERING	6
3	CERTIFICATES	7
PT PRODUCT		8
1	PMEC ANCHORAGE	9
	• OVERVIEW	10
	• APPLICATION OF PMECHANORAGE	11
	• PMECHANORAGE FLAT ANCHORAGE	12
	• PMECHANORAGE ROUND ANCHORAGE	13
2	DUCT	14
3	MACHINE - ACCESSORIES	
TYPICAL PROJECTS		16

ABOUT US

Having established in 2007, PHU MY Engineering & Construction Joint Stock Company (PMEC) is very proud as the first Vietnam professional company in applying the post tensioning design and construction for building and industrial projects.

We dedicate our best efforts to promote the application of the latest techniques and state-of-the-art of the construction industry in Vietnam to best serve the community benefit by minimizing the construction cost and schedule while still maximizing the project quality.

To achieve this mission, our experienced staffs with enthusiastic spirit working towards the “Best efforts for clients’ interests” always commit to deliver the highest added value services to our esteemed clients.

A significant milestone is achieved in successfully researching and producing the post tensioning products of PMEC post tensioning system including: PMEC lived-end anchorages, duct, tendon chair and other equipment for the post tensioning installation.

The PMEC anchorage system was granted the Industrial Design Patent by the Vietnam Intellectual Property Bureau under the Ministry of Science and Technology according to the Decisions number 1118w/QĐ-SHTT and 1127w/QĐ-SHTT dated January 28, 2021.

D' EDGE THAO DIEN - HCM CITY



PMEC anchorage is a part of a synchronizing PMEC post tensioning system and complying with European standards of BS 4447 and BS EN 13391. The anchorage products are also well performed according to European ETAs of ETAG 013/ EAD 160004. Our products were successfully applied in various post tensioning projects in Vietnam.

FIELD OF ACTIVITIES

PMEC has successfully inherited, applied and developed the latest knowledge of post tensioning field of design & construction of post tensioning solution for building & industrial projects.

On that basis, PMEC is continuing all improvements for our services and products to develop the company in its core business fields:

HOPE RESIDENCE - HA NOI



PRODUCTION AND TRADING



POST TENSIONING DESIGN & CONSTRUCTION

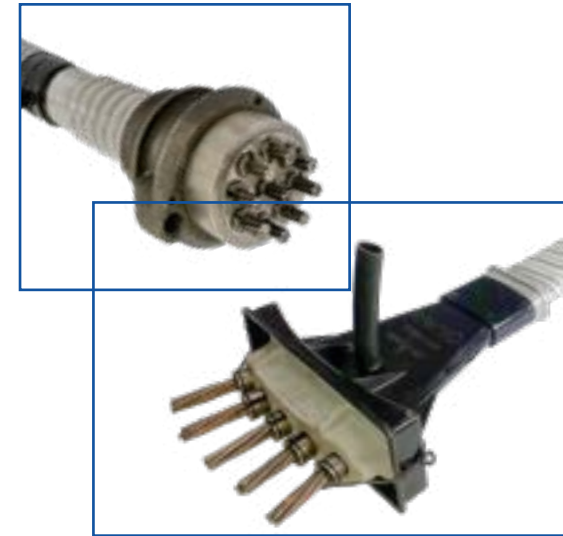


STRUCTURAL ENGINEERING



PRODUCTION AND TRADING

PMEC continue to extend its production of mechanical products of PMEC system for post tensioning field in Vietnam and overseas markets. The most important part of PMEC system is the lived-end anchorages those are suitable for most popular post tensioning application.



POST TENSIONING DESIGN & CONSTRUCTION

Since 2007 till now, we have accumulative experiences over 300 projects in Vietnam and neighbor countries. We target to become the leading post tensioning firm in Vietnam.

HACOM GALACITY - NINH THUAN

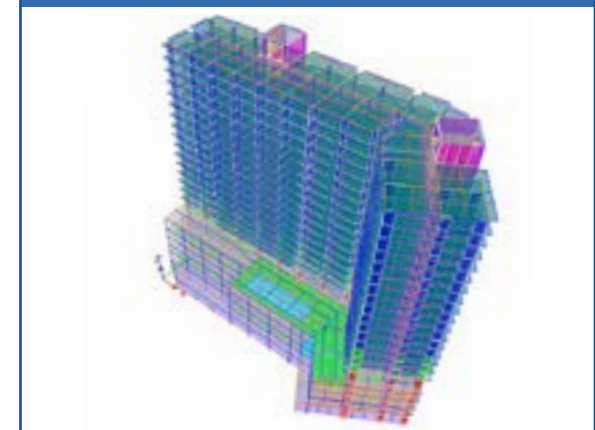


STRUCTURAL ENGINEERING

Design & Engineering services provided by PMEC are always meet clients' requirement in terms of budget, schedule and quality. In any design/ engineering projects we always discuss thoroughly with our clients to formulate the most suitable specification for the project and set the budget in early stage. Our design focuses on the specification, budget, schedule and quality to satisfy clients' high requirements.

PMEC has implemented and completed many large-scale projects in Vietnam as structural engineering consultants or architect (via PMAC). We are able to provide our esteemed clients full scope design/engineering services, peer review for industrial and building projects. Our design professional licenses could be verified in the Ministry of Construction Website.

APARTMENT - TP. HCM



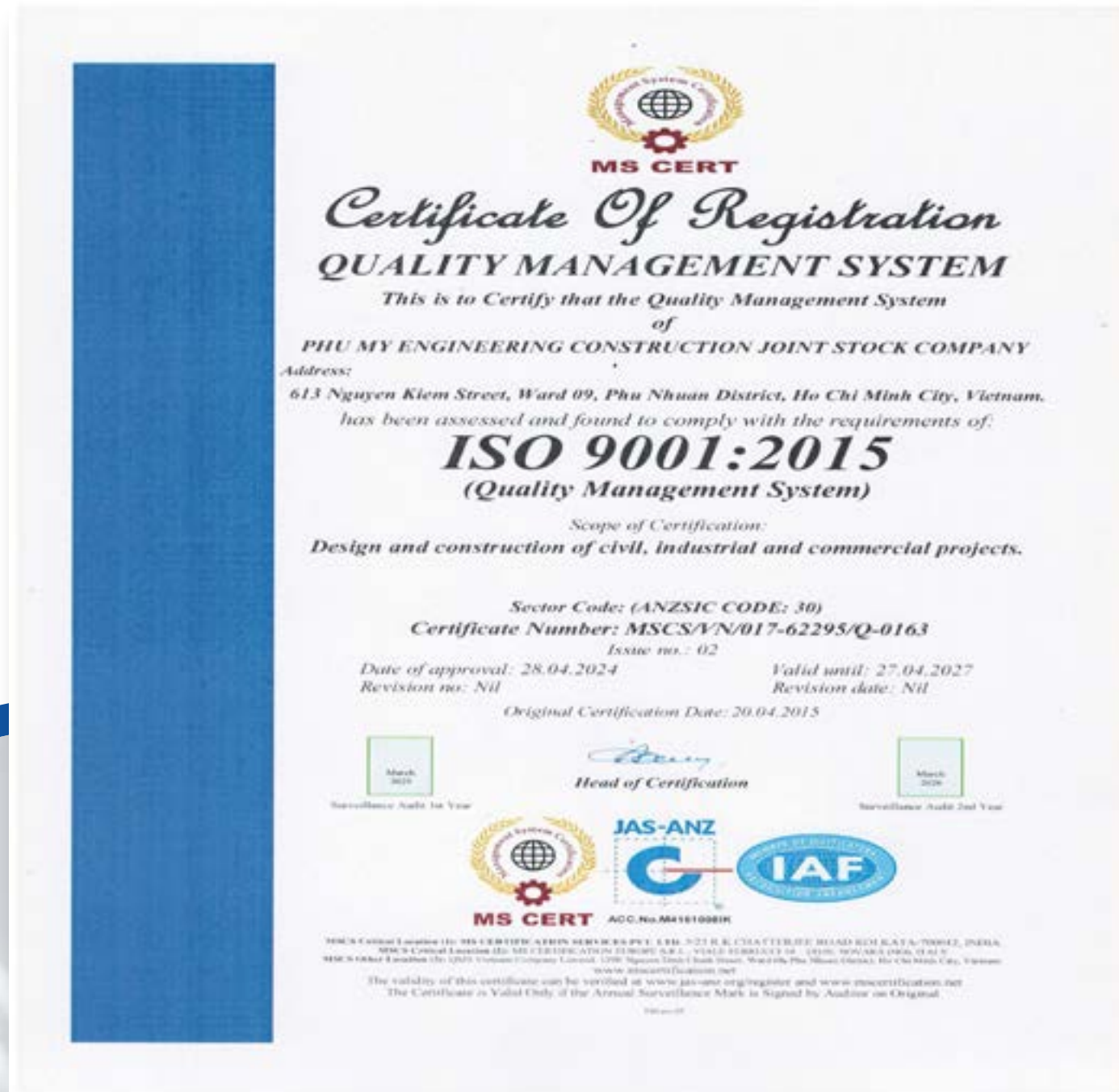
CERTIFICATES



BUSINESS LICENSE


CERTIFICATE OF CONSTRUCTION
ACTIVITY CAPABILITY

CERTIFICATES



CERTIFICATE OF APPROVAL
ISO 9001:2015



CONFORMS TO STANDARD
BS 4447:1973

PMEC ANCHORAGE SYSTEM



BW CU CHI - HCM CITY



GENERAL INTRODUCTION

The tendon anchorage is very important in post tensioning concrete structure since it holds the stress in the tendon and transfer this pre-stress to the concrete. The anchorage plays the decisive role in maintaining the structure life cycle.

This is the reason why professional post tensioning firms in the world has developed their owned anchorages for their owned system to assure the quality.

The main objectives in developing the owned anchorages is to make sure the stressing work is well controlled to minimize the stress loss and potential errors of the post tensioning crew since each system requires different detailed method and accessories tools & equipment. This is to make sure the pre-stress is according to the design as well as the structure sustainability.



Anchorage head - 2 holes



Anchorage head - 3 holes



Anchorage head - 4 holes



Anchorage head - 5 holes



Anchorage head - Round type

LAVITA CHARM - HCM CITY

PMEC post tensioning system is suitable for all concrete structures of building, industrial and civil projects.



EUROPEAN TECHNICAL ASSESSMENT
POST-TENSIONING SYSTEMS

www.eota.eu

The PMEC anchorage system was granted the Industrial Design Patent by the Vietnam Intellectual Property Bureau under the Ministry of Science and Technology according to the Decisions number 1118w/QĐ-SHTT and 1127w/QĐ-SHTT dated January 28, 2021.exclusive certification.

CODES & STANDARDS COMPLIANCE

- ✓ PMEC anchorage is a part of a synchronizing PMEC post tensioning system and complying with European standards of BS 4447 and BS EN 13391 and the requirement of American ACI 318 standards.
- ✓ The anchorage products are also well performed according to European ETAs of ETAG 013/ EAD 160004. Our products were successfully applied in various post tensioning projects in Vietnam.

STANDARDIZE, SPECIFICATION AND CONVENIENCE

- ✓ The anchorages are synchronized with equipment, tool and accessories to assure the quality of stressing work and minimize the stressing loss. The anchorage complies with 12.7mm and 15.24 mm strands.
- ✓ The trumpet and pocket former made by the plastic or recycle plastic: suitable for green projects in terms of using the recycle material.
- ✓ The horseshoe design helps in distribute the concentrated stress to the bearing plate and to the concrete structure.
- ✓ Easy in installation and transportation.

APPLICATION OF PMEC ANCHORAGE SYSTEM



1 APPLICATION IN BUILDING AND INDUSTRIAL PROJECTS

Suitable for all building and industrial projects with optimum cost, schedule and functions. PMEC anchorages include the flat type of 2 holes – 5 holes for the slab structure application. The multi-strand type from 6-31 holes used for transferred beams or slabs.



2 TRANSPORTATION PROJECTS

The multi-strand type from 6 – 31 holes is used for girders while the flat type is used in bridge slabs.

3 FOUNDATION WORKS

The anchorages could be used in ground anchor projects such as basement walls or similar retaining wall projects.



QUALITY ANNOUNCEMENT CERTIFICATE



QUATEST 3
TRUNG TÂM KỸ THUẬT TIÊU CHUẨN ĐO LƯỜNG CHẤT LƯỢNG 3
QUALITY ASSURANCE & TESTING CENTER 3

KT3-0017BCK3 PHẪU KẾT QUẢ THỬ NGHIỆM
TEST REPORT 15/10/2021 Page 01/03

1. Tên mẫu: NEO - CÁP BỤI/ ỨNG LỰC 152 mm
2. Số lượng mẫu: 01
3. Mô tả mẫu: Mẫu là cáp thép dự ứng lực Ø 15,2 mm
4. Ngày nhận mẫu: 11/09/2021
5. Ngày thử nghiệm: 06/10/2021
6. Nơi gửi mẫu: CÔNG TY CỔ PHẦN KỸ THUẬT XÂY DỰNG PHÚ MỸ
196/12 Cộng Hòa, Tân Bình, TP Hồ Chí Minh
7. Phương pháp thử: EAD ETAG - 2013
8. Kết quả thử nghiệm: Xem trang 02/03, 03/03
See pages

TL. TRƯỞNG PHÒNG CƠ KHÍ
FOR HEAD OF MECHANICAL TESTING LAB.
Lâm Chí Tài

TL. GIÁM ĐỐC / PP. DIRECTOR
TRUNG TÂM THỬ NGHIỆM
MECHANICAL TESTING LAB.
Nguyễn Văn Tùng

QUATEST 3
TRUNG TÂM KỸ THUẬT TIÊU CHUẨN ĐO LƯỜNG CHẤT LƯỢNG 3
QUALITY ASSURANCE & TESTING CENTER 3

KT3-0017BCK3 PHẪU KẾT QUẢ THỬ NGHIỆM
TEST REPORT

8. Kết quả thử nghiệm/ Test results:

Tên chỉ tiêu Specification	Kết quả thử nghiệm Test result
THỬ NGHIỆM MỀM MỀM / FATIGUE TEST	
1. Đường kính danh nghĩa của thép, Ø Nominal diameter	mm 15,2
2. Diện tích mặt cắt ngang danh nghĩa, Cross section area	mm ² 140
3. Ứng suất tải tối thiểu σ_{ap} Minimum testing stress	MPa 1.209
4. Phạm vi ứng suất σ_{ap} Range of testing stress	MPa 80
5. Số chu kỳ tải Number of testing cycles	2.110 ⁶
6. Kết quả Test result	Không hỏng Not damaged

QUATEST 3
TRUNG TÂM KỸ THUẬT TIÊU CHUẨN ĐO LƯỜNG CHẤT LƯỢNG 3
QUALITY ASSURANCE & TESTING CENTER 3

KT3-0017BCK3 PHẪU KẾT QUẢ THỬ NGHIỆM
TEST REPORT 18/10/2021 Page 01/03

1. Tên mẫu: NEO PMEC 3 LỖ
NEO PMEC 4 LỖ
NEO PMEC 5 LỖ
CÔNG TRÌNH CHUNG CƯ NGUYỄN BỈNH
2. Số lượng mẫu: 03 Cáp thép/ Steel wire strand
03 Mũi/ Anchor
03 Mũi/ Wedge
3. Mô tả mẫu: Mẫu là cáp thép dự ứng lực Ø 15,2 mm (3 - 1 m - Nilon - Nilon 3 LỖ - Nilon 4 LỖ - Nilon 5 LỖ)
4. Ngày nhận mẫu: 12/01/2021
5. Ngày thử nghiệm: 10/01/2021
6. Nơi gửi mẫu: CÔNG TY CỔ PHẦN KỸ THUẬT XÂY DỰNG PHÚ MỸ
613 Nguyễn Kiệm, Phường 9, Q. Phú Nhuận, TP Hồ Chí Minh
7. Phương pháp thử: BS EN 12756-2004, TCVN 10588: 2018
8. Kết quả thử nghiệm: Xem trang 02/03, 03/03
See pages

TRƯỞNG PHÒNG CƠ KHÍ
HEAD OF MECHANICAL TESTING LAB.
Phạm Văn Chí

TL. GIÁM ĐỐC / PP. DIRECTOR
TRUNG TÂM THỬ NGHIỆM
MECHANICAL TESTING LAB.
Nguyễn Văn Tùng

QUATEST 3
TRUNG TÂM KỸ THUẬT TIÊU CHUẨN ĐO LƯỜNG CHẤT LƯỢNG 3
QUALITY ASSURANCE & TESTING CENTER 3

KT3-0017BCK3 PHẪU KẾT QUẢ THỬ NGHIỆM
TEST REPORT 18/10/2021 Page 02/03

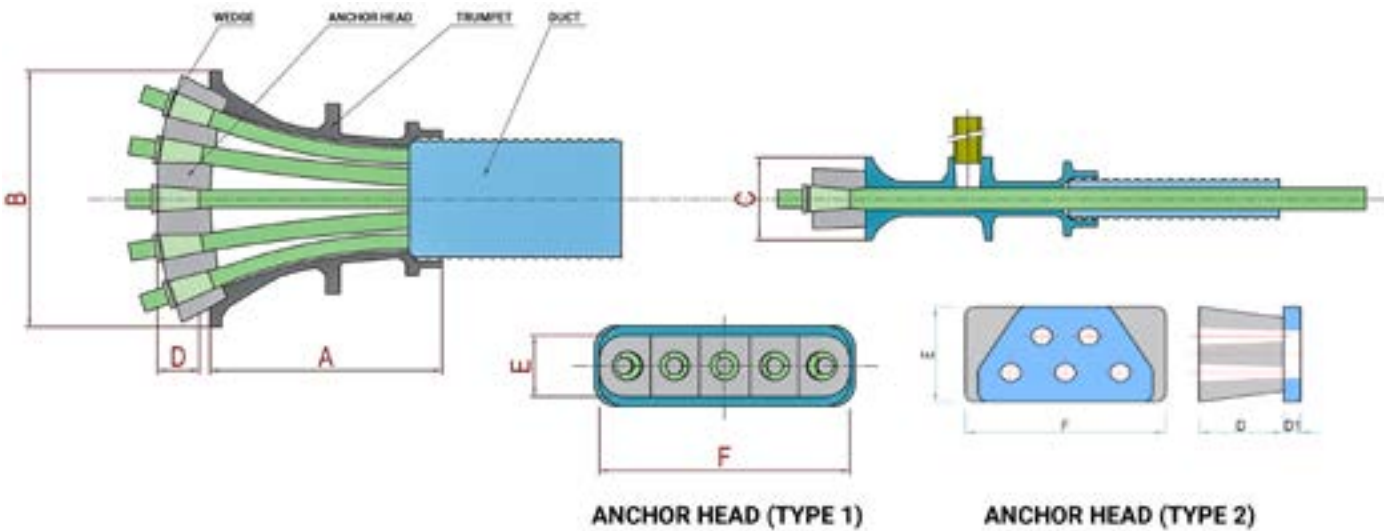
8. Kết quả thử nghiệm/ Test results:

Tên chỉ tiêu Specification	Kết quả thử nghiệm Test result
THỬ NGHIỆM MỀM MỀM / WEDGE TEST	
8.1. Tải trọng tại 20% F_{ax} Load at 20% F_{ax}	KN 31,0 41,0 51,0 34,8 36,8 36,8
8.2. Chiều cao của mũi tại F1, Height of wedge at load F1	mm 1,09 3,32 8,46
8.3. Tải trọng tại 40% F_{ax} Load at 40% F_{ax}	KN 77,6 77,6 77,6
8.4. Chiều cao của mũi tại F2, Height of wedge at load F2	mm 9,11 1,94 3,39
8.5. Tải trọng tại 80% F_{ax} Load at 80% F_{ax}	KN 147,2 147,2 147,2
8.6. Chiều cao của mũi tại F3, Height of wedge at load F3	mm -0,80 0,96 5,34
• Thời gian duy trì 1 phút Maintained time 1 minute	-0,87 0,60 4,71
• Thời gian duy trì 15 phút Maintained time 15 minute	-0,89 0,82 4,74

Tên chỉ tiêu Specification	Kết quả thử nghiệm Test result
THỬ NGHIỆM CÁP - MŨI - NEO LOAD TEST OF CABLE - WEDGE-ANCHOR	
8.7. Lực kéo đứt Tensile load	KN 180,4 180,5 180,7
8.8. Vị trí hỏng Broken position	(*) (*) (*)

Ghi chú/ Notes: (*) Đứt cáp, mũi và neo không hỏng
Cable broken, wedge and anchor not damaged

FLAT ANCHORAGE



12.7mm Cable						
Type	Trumpet dimension			Anchorage head dimension		
	A	B	C	D	E	F
PT205	214	183	99	46	75	132
PT305	214	183	99	46	75	155
PT405	247	205	99	46	75	178
PT505	263	250	99	46	75	222

15.24mm Cable						
Type	Trumpet dimension			Anchorage head dimension		
	A	B	C	D	E	F
PT206	214	183	99	52	75	154
PT306	247	205	99	52	75	178
PT406	263	250	99	52	75	222
PT506 (T1)	310	280	99	52	75	253
PT506 (T2)	285	212	120	52 / 12	100	193



3A-3B Tôn Đức Thắng

ANCHORAGE HEAD - 2 HOLES



TOP



UNDERNEATH



FRONT



SIDE

ANCHORAGE HEAD - 3 HOLES



TOP



UNDERNEATH



FRONT



SIDE

ANCHORAGE HEAD - 4 HOLES



TOP



UNDERNEATH



FRONT



SIDE

ANCHORAGE HEAD - 5 HOLES
(TYPE 1)



TOP



UNDERNEATH



FRONT



SIDE

ANCHORAGE HEAD - 5 HOLES
(TYPE 2)



Top



Underneath



Front



Side

ANCHOR BEARING PLATE
(TYPE 1)



Top



Underneath



Front



Side

ANCHOR BEARING PLATE
(TYPE 2)



Top



Underneath



Front



Side

POCKET FORMER



Top



Underneath

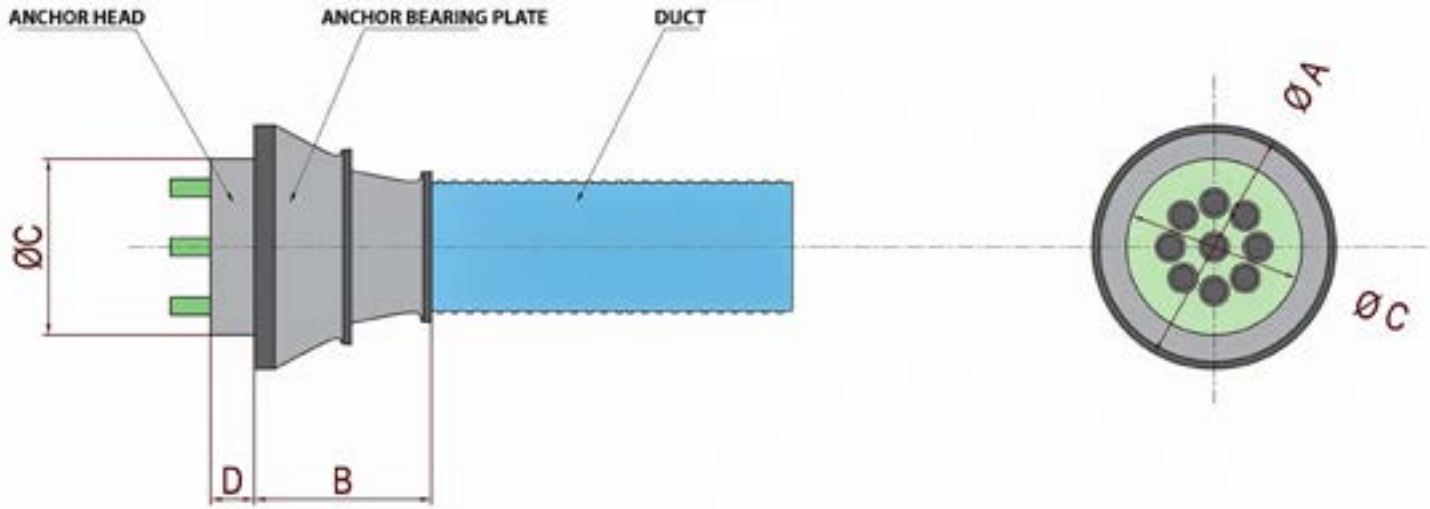


Front



Side

ROUND ANCHORAGE



12.7mm CABLE				
Type	Anchor bearing plate dimension		Anchor head dimension	
	Round	Length	$\varnothing C$ (mm)	D (mm)
	A (mm)	B (mm)		
PT605	160	130	107	45
PT705	160	130	107	45
PT805	170	160	117	48
PT905	180	160	127	48
PT1005	200	180	137	50
PT1105	200	180	137	50
PT1205	210	190	147	50
PT1305	210	190	147	50
PT1405	210	210	157	52
PT1505	215	230	157	52
PT1605	245	240	167	55
PT1705	245	240	167	55
PT1805	245	270	176	65
PT1905	245	270	176	65

15.24mm CABLE				
Type	Anchor bearing plate dimension		Anchor head dimension	
	Round	Length	$\varnothing C$ (mm)	D (mm)
	A (mm)	B (mm)		
PT606	180	150	123	48
PT706	180	150	123	48
PT806	195	160	137	50
PT906	208	170	147	50
PT1006	220	180	158	52
PT1106	235	190	158	52
PT1206	235	190	158	54
PT1306	235	190	168	54
PT1406	250	210	178	56
PT1506	265	245	178	56
PT1606	275	265	188	60
PT1706	275	265	188	60
PT1806	285	280	198	65
PT1906	285	280	198	65

DUCT

In the construction, the commonly used duct is a galvanized iron material, with a thickness of 0.25~0.3 mm. The size depends on the number of strand in the cable. However, in recent years, the galvanized iron duct has been progressively replaced by a plastic duct. Particularly in the construction market, which requires strict quality standards like Europe, almost all plastic duct in the construction of prestressed cables have been widely used, gradually replacing the iron duct.

Good quality and suitable duct will not be deformed, not open, not hinder the stretching process as well as corrode the cable in the long term; limits friction and stress loss during tension construction and helps the mortar to be filled to protect the cables, contributing to a longer and more sustainable construction.

PMEC DUCT

GALVANIZED IRON DUCT - FLAT TYPE



PLASTIC DUCT - FLAT TYPE



GALVANIZED IRON DUCT - ROUND TYPE

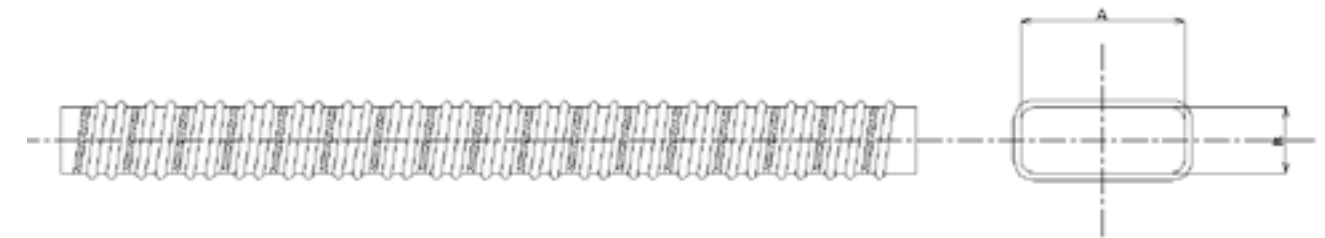


PLASTIC DUCT - ROUND TYPE



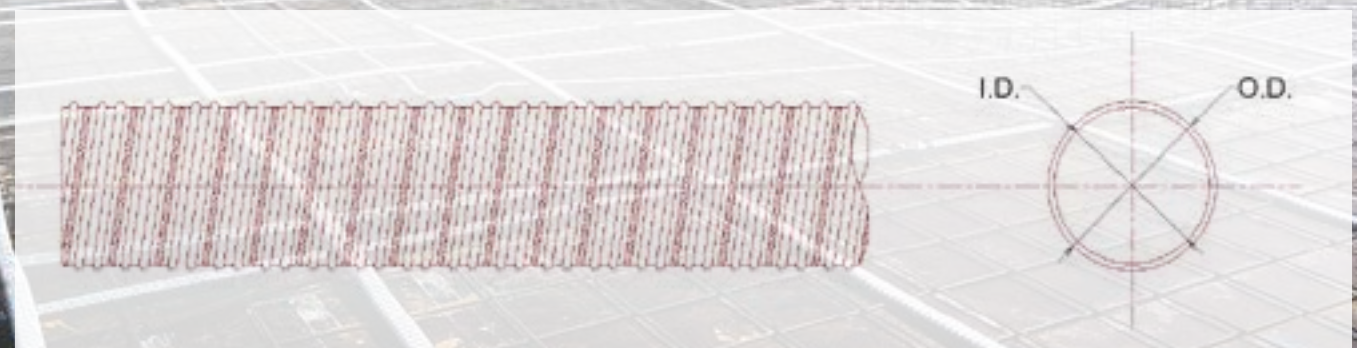
SPECIFICATION OF FLAT DUCT

12.7mm			15.24mm		
Type	Dimension		Type	Dimension	
	B (mm)	A (mm)		B (mm)	A (mm)
PT205	20	50	PT206	20	50
PT305	20	60	PT306	20	60
PT405	20	70	PT406	20	80
PT505	20	80	PT506	20	90



SPECIFICATION OF ROUND DUCT

Type	Dimension	
	I.D. (mm)	O.D. (mm)
6~7 holes	D70	D82
8~9 holes	D80	D94
10~13 holes	D90	D104
14~15 holes	D100	D114
16~19 holes	D110	D114
20~27 holes	D120	D136
28~31 holes	D130	D146



MACHINERY, EQUIPMENT & ACCESSORIES



MONO JACK



DEAD END ONION JACK



MULTI JACK



STAPLER GUN



BAR CHAIR



DEAD END ANCHOR CONNECTOR



STRAND PUSHER AND CUTTER



HYDRAULIC PUMP



MORTAR PUMP



AIR COMPRESSOR



VALVE



PIPE

TYPICAL PROJECTS

After more than 15 years of establishment and development, PMEC has been always proud of its ability to manufacture and supply all kinds of materials and equipment for production, business and trade in the market in the field of PT construction.

Phu My has supplied and installed PMEC anchorage system for many large and small projects in different provinces of Vietnam. Notably, there are some typical projects such as:

- The Nexus - Ricons
- Topaz Home District 9 - Viet Phat
- Bw 15 Factory - An Phu Gia & I-Tech
- Southern Guest House - General Department of Logistics - Phuc Hung Holdings
- Hyatt Place Ha Long Bay Hotel - Ricons
- Toyota Kien Giang - Novacons
- Hacom Galacity - Van Lang
- Nhat Ha Hotel - Ricons
- New Far Eastern - ACSC
- Dong Nai Administrative Center - Bien Hoa Dong Nai Project Management Unit
- CT Plaza Nguyen Hong - C.T Group...

And many other projects are scattered from North to South.

BW CU CHI - HCM CITY



TOPAZ HOME DISTRICT 9



FACTORY BW 15



THE NEXUS



HACOM GALACITY



NHAT HA HOTEL



NEW FAR EASTERN



DONG NAI ADMINISTRATIVE CENTER



CT PLAZA NGUYEN HONG



SOUTHERN GUEST HOUSE - GENERAL DEPARTMENT OF LOGISTICS

TOPAZ HOME DISTRICT 9

50,000 m² | 17 floors - 4 Blocks



Project	: TOPAZ HOME 2
Address	: Tan Phu Ward, District 9, HCM City
Investor	: Thuan Kieu Company và Van Thai Land
Main contractor	: VIET PHAT INVESTMENT - TRADE COMPANY LIMITED
Item	: Supply PMEC anchorage

PROJECT SCALE

Total area	: 50,000 m ²
Number of floors	: 04 Block, 17 floors
Number of PMEC anchor	: > 3,500 anchorages: 03~05 holes (12.7mm)

FACTORY BW 15

90,000 m² | 2 floors



Project	: FACTORY BW 15
Address	: Tan Phu Trung Industrial Park, Cu Chi, HCM City
Investor	: SAIGON LOGISTICS INDUSTRIAL DEVELOPMENT LIMITED LIABILITY COMPANY
Main contractor	: An Phu Gia & I-Tech
Item	: Supply PMEC anchorage

PROJECT SCALE

Total area	: 90,000 m ²
Number of floors	: 02 floors
Number of PMEC anchor	: > 2,837 anchorages: 04 holes (15.24mm)

THE NEXUS

133,834 m² | 26-35 floors



Project : THE SUN TOWER
 Address : Ton Duc Thang Street, Ben Nghe Ward, District 1, HCMC
 Investor : RC Real Estate Financing Development JSC (Refico)
 Main contractor : Ricons Construction Investment Group Joint Stock Company
 Item : Supply PMEC anchorage

PROJECT SCALE

Total area : 100,000 m²
 Number of floors : 26-35 floors
 Number of PMEC anchor : > 6,500 anchorages: 05 holes

HACOM GALACITY

50,000 m² | 12 floors - 4 blocks



Project : HACOM GALACITY
 Address : New urban area, North City. Phan Rang, Thap Cham, Ninh Thuan Province
 Investor : Thanh Dong Ninh Thuan Joint Stock Company
 Main contractor : Van Lang Co.,Ltd
 Item : Supply PMEC anchorage

PROJECT SCALE

Total area : 50,000 m²
 Number of floors : 04 Blocks, 12 floors
 Number of PMEC anchor : > 4,000 anchorages: 02 holes and 04 holes

NHAT HA HOTEL

19,000 m² | 15 floors



Project	: NHAT HA HOTEL
Address	: Le Hong Phong Street, Dong Khe Ward, Ngo Quyen District, Hai Phong City
Investor	: Hotels Nhat Ha Co.,Ltd
Main contractor	: RICON GROUP CONSTRUCTION INVESTMENT JOINT STOCK COMPANY
Item	: Supply PMEC anchorage

PROJECT SCALE

Total area	: 19,000 m ²
Number of floors	: 15 floors
Number of PMEC anchor	: > 978 anchorages: 02 holes và 03 holes

NEW FAR EASTERN

60,000 m² | 3 floors



Project	: FACTORY NEW FAR EASTERN
Address	: D5 Street, Bac Dong Phu Industrial Park, Dong Phu District, Binh Phuoc Province
Investor	: New Apparel Far Eastern Co., Ltd. (Vietnam)
Main contractor	: ARCHITECTS & CONSTRUCTION SERVICE CORPORATION
Item	: Supply PMEC anchorage

PROJECT SCALE

Total area	: 60,000 m ²
Number of floors	: 03 floors
Number of PMEC anchor	: > 1,280 anchorages: 02 holes, 03 holes and 04 holes

DONG NAI ADMINISTRATIVE CENTER

20,000 m² | 9 floors



Project	: DONG NAI ADMINISTRATIVE CENTER
Address	: H22, Vo Thi Sau Street, Thong Nhat Ward, Bien Hoa, Dong Nai Province
Investor	: Project Management Board Bien Hoa, Dong Nai
Main contractor	: Xuan Thanh Construction Development Co.,LTD & Phat Dat Co.,LTD
Item	: Supply PMEC anchorage

PROJECT SCALE

Total area	: 20,000 m ²
Number of floors	: 09 floors
Number of PMEC anchor	: 1,070 anchorages: 02 holes, 03 holes and 05 holes

CT PLAZA NGUYEN HONG

40,000 m² | 17 floors



Project	: CT PLAZA NGUYEN HONG
Address	: No 18, Nguyen Hong Street, Ward 1, Go Vap District, HCM City
Investor	: C.T Group Joint Stock Company
Main contractor	: CRICONS GROUP CONSTRUCTION INVESTMENT JOINT STOCK COMPANY
Item	: Supply PMEC anchorage

PROJECT SCALE

Total area	: 40,000 m ²
Number of floors	: 17 floors
Number of PMEC anchor	: > 1,270 anchorages: 03~05 holes

GUEST HOUSE GENERAL DEPARTMENT OF LOGISTICS - KHANH HOA

30,000 m² | 18 floors

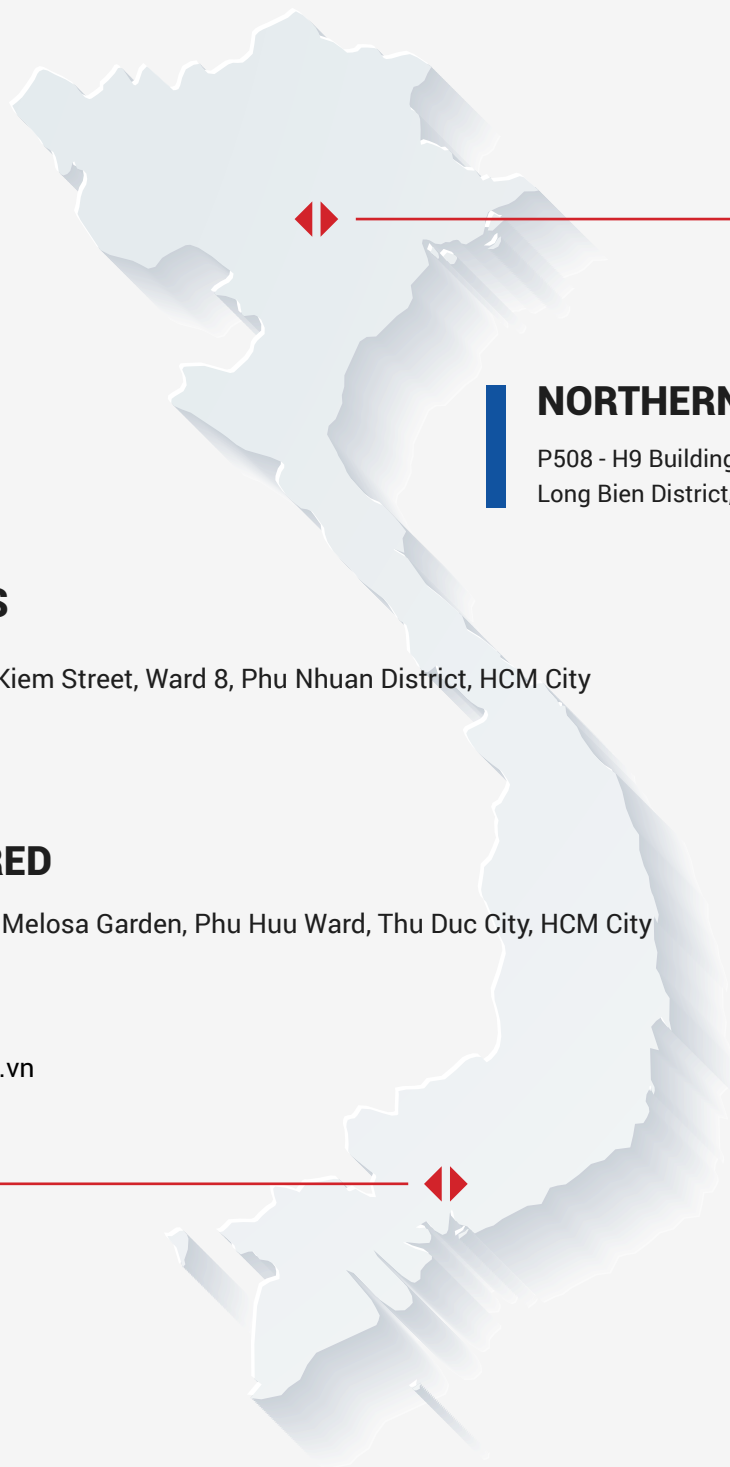


Project	: Guest House General Department of Logistics - KHANH HOA
Address	: Loc Tho Ward, Nha Trang City, Khanh Hoa Province
Investor	: General Department of Logistics Khanh Hoa
Main contractor	: Phuc Hung Holdings Construction Joint Stock Company
Item	: Supply PMEC anchorage

PROJECT SCALE

Total area	: 15,069m ²
Number of floors	: 14 floors
Number of PMEC anchor	: > 943 anchorges: 02 holes, 03 holes


CONTACT







NORTHERN OFFICE

P508 - H9 Building, Viet Hung
Long Bien District, Ha Noi City

HEADQUARTERS

 No 613 Nguyen Kiem Street, Ward 8, Phu Nhuan District, HCM City
 (028) 6675 1279
 (028) 6675 1279

OFFICE DELIVERED

 No 34 Street 1D, Melosa Garden, Phu Huu Ward, Thu Duc City, HCM City
 (028) 6675 1279
 (028) 6675 1279
 info@pmec.com.vn



PHU MY ENGINEERING CONSTRUCTION JOINT STOCK COMPANY

Website: www.pmec.com.vn
Email: info@pmec.com.vn
Phone: (84-28) 6675 1279

